

CERTIFIED LAND CORNER RECORDATION

MAY 1 1988

DESCRIPTION OF CORNER EVIDENCE FOUND, AND ORIGINAL RECORD (if known)
Found no evidence of previous monumentation.

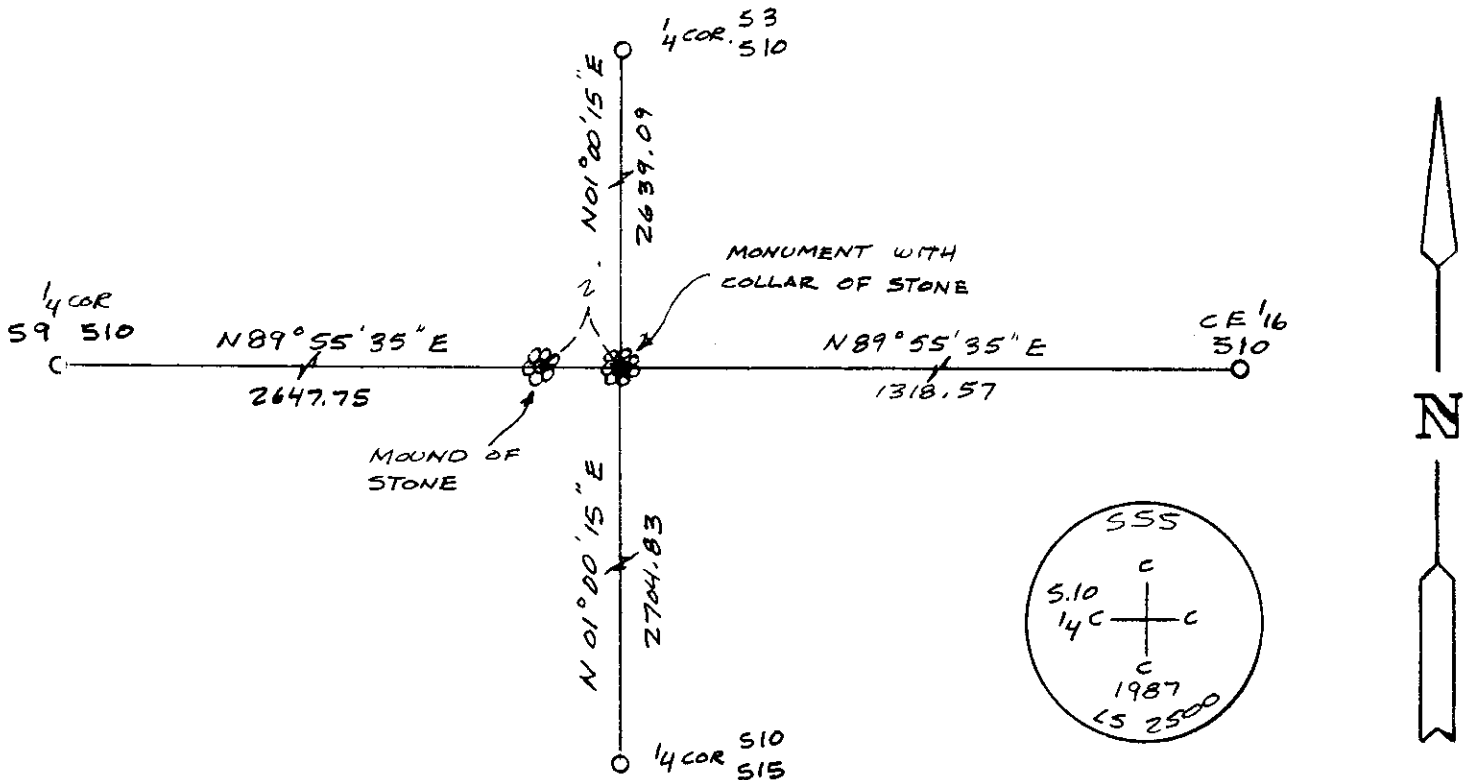
Center
1/4
S.10
T.13
6th P.M. G.L.O. Record - Unknown.

DESCRIPTION OF MONUMENT AND ACCESSORIES ESTABLISHED TO PERPETUATE THE ORIGINAL LOCATION OF THIS CORNER:

At the corner: Set 5/8" x 18" rebar with 2" aluminum cap projecting 0.3 feet above ground with a collar of stone and raised mound of stone 2 feet West of monument 4 feet high stamped as shown below.

Accessories: See ties below.

SKETCH, WITH COURSE AND DISTANCE TO ADJACENT CORNER IF DETERMINED IN THIS SURVEY.
(May Sketch or Paste Reproduction on Reverse Side.)



I, John A. Steil certify that I have carefully performed or reviewed the work done on the diagrammed corner as reported on this recordation form and approve the same.

John A. Steil
Signature of Surveyor

L.S. 2500
Registration No.

STATE OF WYOMING,
Office of Clerk and Recorder,
County of Laramie

This "corner record" was filed for record on the 5th day of May, 1988, was noted on the cross-index plat and is assigned page No. 1968, in book No. 1259

Janet C. Whitehead
County Official

Cross Index No.	G-15	T. 13N	R. 64W	Mer. 6th